



A Life Designed for Perfection

Life will never be viewed the same way again.

Belle Corporation once again redefines the landscape of leisure estates in the country with its latest development, the Lakeside Fairways. Set against the backdrop of majestic Mount Makling, the serene lake of historic Taal Volcano, and the Tagaytay Highlands ridge, this breathtaking residential enclave is situated at the heart of the Tagaytay Midlands development, guaranteeing the privacy that every Highlands homeowner-member requires.

Following the success of its world-class residential communities in Tagaytay Highlands and Tagaytay Midlands, now comes its latest creation that is truly inspired by the constantly changing and mesmerizing scenery of the Highlands. In the midst of fairways that seem to extend beyond the horizon, you will be drawn to enter a world that holds the most remarkable abundance of nature at 1,000 feet above sea level, at the Lakeside Fairways.

Created by nature, perfected by inspiration.



Ready. Set. Golf.

Excitement reaches new heights at the Midlands Golf Course. Just when you thought you couldn't beat the experience of teeing off at 2,000 feet above sea level at Tagaytay Highland's 6,199-yard / par 70 course, then taking a 5-minute Swiss funicular ride down 1,000 feet to Tagaytay Midlands's 7,027-yard / par 72 Championship Course set against the majestic view of the Taal Volcano Lake, Belle Corporation lays out its plans to bring you the third nine holes of the Tagaytay Midlands Golf Course.

Dubbed as the "Lakeside Course," this proposed 9-hole addition at the Midlands will present a series of scenic and exciting golf holes that will challenge the mettle of golfers at every level.

With a total length of 3,548 yards from the championship tees, it will take players through a series of holes which play toward every direction of the compass. Strategically placed greens, water features and hazards will delight and entice the brave-hearted to use every arsenal in their bag while the less experienced players will be assured of comfortable tee placements that will allow them an enjoyable golfing experience.

The layout is designed to be integrated into the back nine holes of the existing Midlands Golf Course thus resulting in a seamless play of 18 holes. This will be accomplished by starting the round on the existing 10th hole which will be played as the 1st hole. The flow of play will then continue from the existing 15th hole to the new hole no. 1 and on through to the new hole no. 9. From there, play returns to the old course at hole no. 16 and finally back to the Midlands Golf Clubhouse at the end of the round.

With the ability given to you in deciding the course flow of your 18-hole game, each game can always be different from the next. Nothing prevents you from even playing the full 27-hole stretch! Golf play couldn't get any more exciting and challenging than this.

And surrounding the velvety-grass silhouette of this course, several pockets of exclusive vacation communities will dare unfold...



Intimate Encounters with the Natural World

Kew Gardens takes its inspiration from the Royal Botanical Gardens, Kew, a World Heritage Site in the United Kingdom which is a world-class attraction known for its flora and fauna. Enthused by the same beauty, Kew Gardens at the Lakeside Fairways is envisioned to have a great diversity of trees, floral plants and greeneries. Marvel at the constantly changing shades of nature.

With a modern country architectural theme, Kew Gardens will feature houses with seamless contemporary aesthetics. The house interiors will be reflective of sweeping horizontal lines and open living areas to make it spacious yet warm. Characterized by simple and clean lines with large windows devoid of decorative trimmings that will make one focus on the charming views of vast garden landscapes that celebrate the natural color palette of abundant floras as they blend with the greens.

Wake up to discover the constantly changing hues of nature's great wonders at the Kew Gardens.



Kew Gardens
Tagaytay Midlands



At The Heart of the Mountains

Alava, considered a perfect place for nature lovers, is a province in Northern Spain in the autonomous community of the Basque Country. It is characterized by an obvious respect of the environment by its inhabitants, as evidenced by a high level of conservation of its enviable sceneries and panoramic views. While that is known as the heart of the Basque region, our very own Terrazas de Alava at Lakeside Fairways is to be known as the heart of the mountains in Tagaytay. The perfect place for modern living in a natural environment, it is nature and luxury – all integrated into your own secluded abode. The lay of the land is slightly terraced, encouraging contemporary country home designs to have vast terraces or *lanais* for a full appreciation of view corridors of the fairways, or the Taal Lake, or the natural landscape. Each view seeming like a natural work of art.

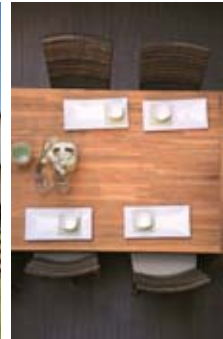
Start living with an infinite canvass of nature's beauty, serenity and exclusivity.

Life goes beyond your expectations at the Terrazas de Alava.

*Terrazas
de Alava*



Tagaytay Midlands



Subdivision Plans*



Terrazas de Alava
Tagaytay Midlands





A Fusion of Modern Comfort and Nature

Create stylish, modern homes within a nature haven.

Comfort, style, and a close encounter with nature are brought together in stylish homes. Prop your feet up and unwind in a spacious and relaxing atmosphere. In every house, sunlight will illuminate the room through large windows, allowing the clean, refreshing breeze of the mountains to flow in easily, conducive to a restful slumber after a stressful week.

Enjoy a way of life with the best of both worlds – where functionality and artistry, modern ingenuity and the natural environment – meet and merge in harmony.

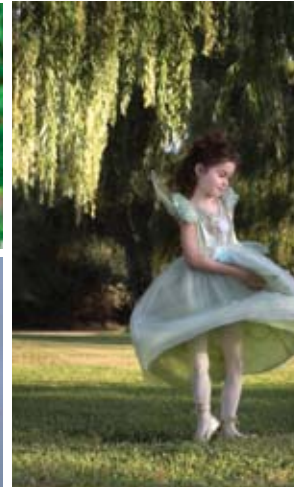




Nature Comes Alive

Rarely does one get a chance to appreciate the country's very own Flora and Fauna. Now, Lakeside Fairways gives nature lovers the perfect opportunity to relish our rich biodiversity at one's own pace. Be in awe with white throated kingfisher, white-bellied munia and striated grassbird in wonder.

Feel the velvety petals of blooms on one's fingers, and feast your eyes in the color of verdant flower fields. Never will Mother Nature's gifts be any closer to you than here at the Lakeside Fairways.





One Property to Nurture, Three Clubs to Enjoy!

It can't get any better than this.

Investing in Lakeside Fairways gives you more value for your money with a proprietary share of the Tagaytay Midlands Golf Club that will automatically come with every lot. This proprietary share gives you a reciprocal relationship with the Tagaytay Highlands Golf and Country Clubs that entitles you to equally enjoy its many world-class amenities

Experience a challenging and refreshing golf play at the two 18-hole championship golf courses designed by American Golf Course Architect Richard Bigler, state-of-the-art sports and recreation facilities at the Sports Center, a myriad of delectable gastronomic options such as the Highlander Steakhouse and The China Palace — just take your pick. Take advantage of magnificent views while riding the country's first and only Swiss cable car and funicular systems, gain access to any of the two helipads, pamper yourself in a rejuvenating spa treatment at the Spa and Lodge, and all other services that Tagaytay Highlands can offer.

At your hands is an indulgence where anything is possible.





Planner

EGD Lopez & Partners

Landscape Architect

Ildelfonso P. Santos

National Artist

IPSantos & Associates

Golf Course Architect

Olenoski Design

Leander, Texas

Engineers

EM²A Partners & Co.

* This material is for announcement purposes only. It is intended primarily to provide a general reference for the Lakeside Fairways development. The photographs of houses that have been made a part of this material are mere representations of the architectural style that has been envisioned and will be acceptable for the proposed communities at Lakeside Fairways. Details of the subdivision plans are only indicative of intended dimensions and sizes. This material therefore does not constitute part of an offer or contract. While the details shown herein were prepared with utmost care and are presented in good faith, interested parties are encouraged to verify their correctness and subsequent changes, if any. In the Developer's continuing effort to meet the challenge of product improvement, the Developer reserves the right to modify or change plans and specifications without prior notice.

Photographs of the Tagaytay Highlands and Tagaytay Midlands Golf and Country Clubs, and its Communities (pp. 1, 3, 15 and 16) are actual and existing.

